

Australian Major Pests of Concern

The following are a list of major pests of concern provided by DAFF to MPI. Some are more likely to be in blueberries while others are extremely unlikely. If any of these pests are found in consignments going to the Australian market, there is the possibility of mandatory measures being forced upon exporting groups of BBNZ.

Aphis gossypii (Cotton Aphid)



Cotton Aphid can have several appearances looking dark green or light green with black siphunculi (the small black protrusions at the back of their abdomens). They also have winged and wingless morphotypes. This pest has a **HIGH** chance of being in blueberry blocks.

Leafroller Species (*Cnephasia jactatana*, *Ctenopseustis herana*, *Ctenopseustis obliquana*, *Planotortrix excessana*, *Planotortrix octo*)



There are several different species of leafrollers in NZ, most of which can be found in Blueberries. All are considered major pests of concern and will cause significant issues if found in consignments. This pest has a **HIGH** chance of being in blueberry blocks.

Bactericera cockerelli (Tomato Potato Psyllid)



Tomato Potato Psyllid is a pest of tomatoes and potatoes. It also vectors several pathogens that can significantly impact some crops. Fortunately, these diseases have not been reported in blueberries. This pest has a **LOW** chance of being in blueberry blocks, however this chance increases if tomatoes or potatoes are grown nearby.

Thrips Species (*Frankliniella intonsa*, *Frankliniella occidentalis*)



There are a number of thrips species found on blueberries and while not all of them are considered major pests of concern for Australia, it is almost impossible to distinguish between species without a compound microscope and technical identification skills. Therefore for exporting growers, all thrips should be considered highly problematic. This pest has a **HIGH** chance of being in blueberry blocks.

Nysius huttoni (Wheat bug)



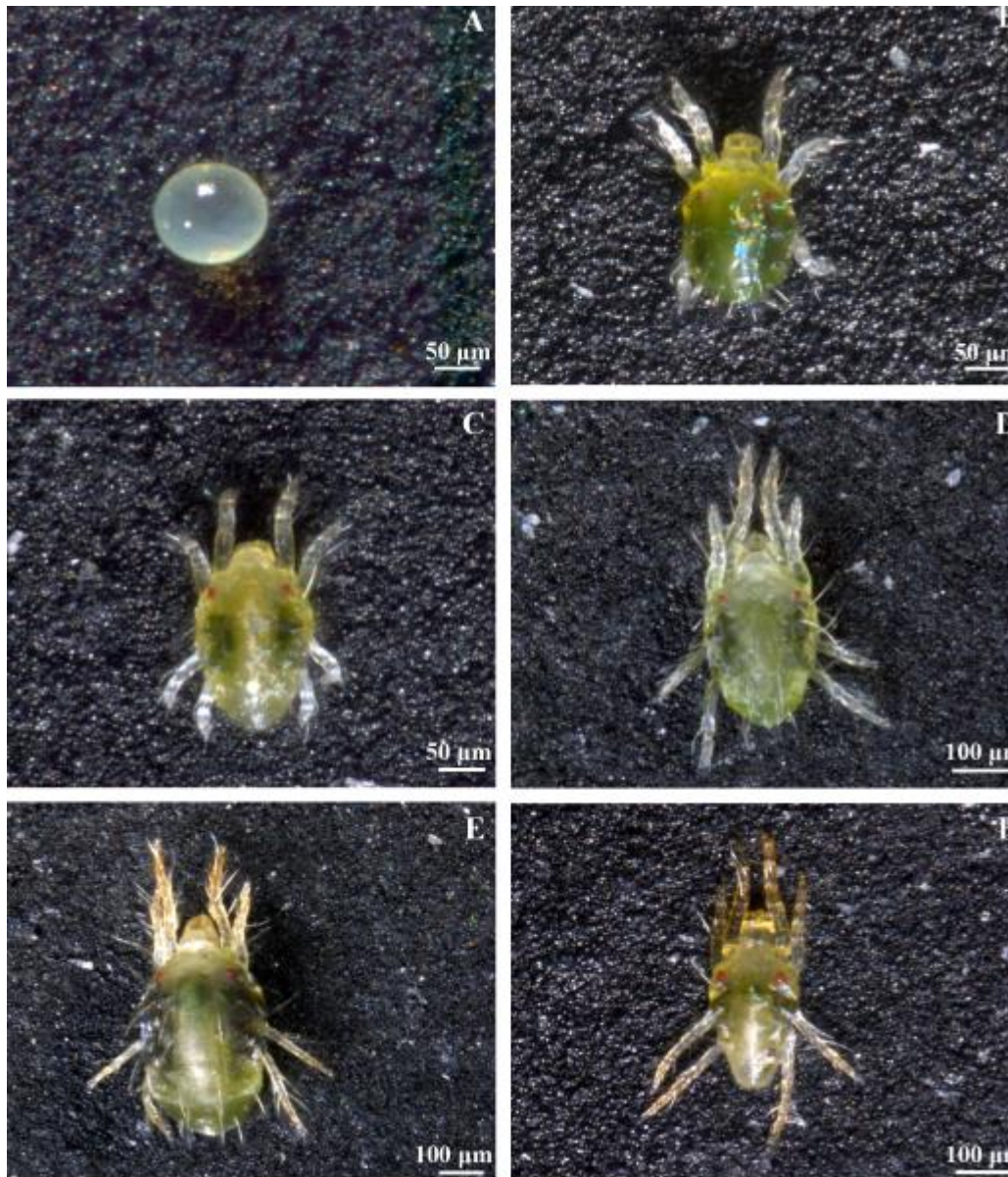
Wheat bugs are fairly widespread across NZ and can be a pest for a number of crops. They don't typically use blueberries as their main food source but can occasionally be found in orchards through chance and particularly if the blocks are located around other crops. This pest has a **Moderate** chance of being in blueberry blocks.

Philaenus spumarius (Spittle bug)



Spittle bugs are widespread across NZ and have a large range of host plants. They can feed on blueberry plants but they usually prefer alternative hosts. Regardless, their potential presence in blueberry orchards means exporting growers need to ensure their harvested fruit are free of any of the pest. This pest has a **Moderate** chance of being in blueberry blocks.

Tetranychus turkestanii (Strawberry spider mite)



Strawberry spider mite is a widespread but often overlooked tiny pest of many different crops. It has been found in avocados, strawberries and by chance blueberries. Many mites are considered pests of concern for Australia but the strawberry spider mite is considered a major pest of concern. This pest has a **Moderate** chance of being in blueberry blocks.

Cochlicella barbara (Small Pointed Snail)



The Small Pointed Snail is a new addition to this list as it was found in consignments during the 2023/2024 export season. They are very small relative to other snails, often only 12mm in height and 5mm wide. Growers can control these snails with releases of chelates and snail baits in November and January. They are particularly prevalent in the Waikato and Tauranga. This pest has a **Moderate** chance of being in blueberry blocks.

Xanthomonas campestris (Bacterial leaf spot)

Bacterial leaf spot caused by *Xanthomonas campestris* has not been reported before in NZ blueberries. This species has been found in blueberries overseas however. Growers that see leaf spot symptoms on their fruit and leaves may wish to get it formally identified. This pest has a **LOW** chance of being in blueberry blocks based on current knowledge but it might be more common than the industry realises.